

# THE COST OF RAISING A CHILD

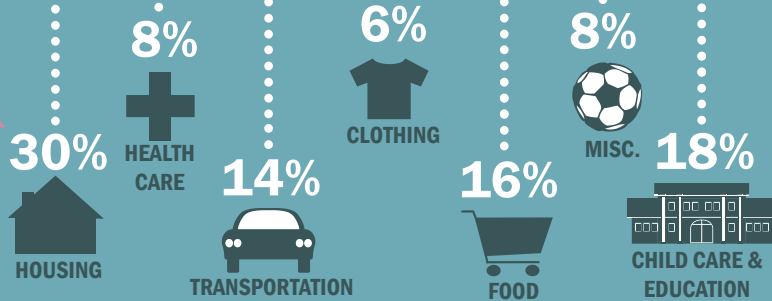
THE INFORMATION PROVIDED  
COVERS THE COST FROM  
BIRTH TO AGE 18.

## \$241,080

### WHERE DOES THE MONEY GO?

AFTER ADJUSTING FOR INFLATION,  
THE COST OF RAISING A CHILD HAS  
INCREASED 23% FROM 1960.

**23%** ↑



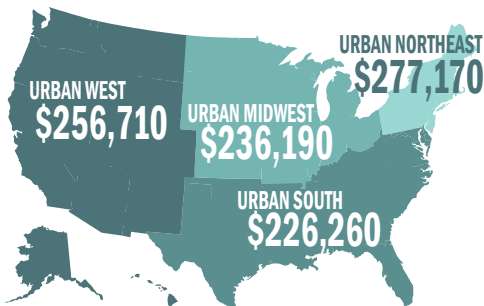
NOT INCLUDING THE ANNUAL  
COST OF COLLEGE

PUBLIC **\$17,860** PRIVATE **\$39,518**

\*The College Board. 2013. Trends in College Pricing 2012.

### COST BY REGION\*

COST TO RAISE A CHILD FROM  
BIRTH TO AGE 18 BORN IN 2012.



RURAL AREAS  
**\$190,290**

### OVERALL VS RURAL HOUSING COSTS\*



### CHILD CARE & EDUCATION

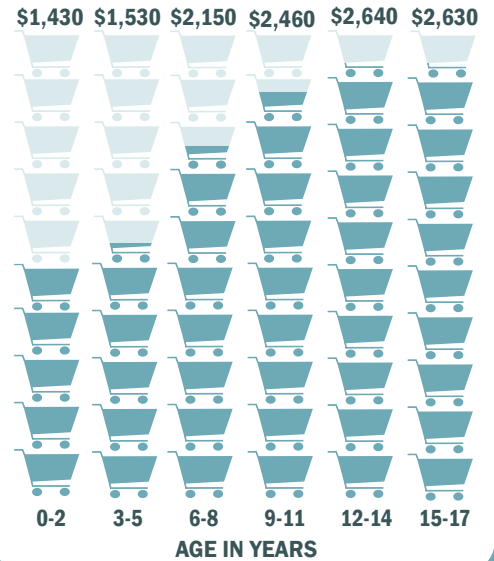
**18%**  
(2012)

**2%**  
(1960)

percentages of  
total expenses



### FOOD COST BY AGE\*



\*U.S. average for middle income husband-wife families.

Source: Expenditures on Children by Families, 2012. U.S. Department of Agriculture, Center for Nutrition Policy and Promotion. Miscellaneous Publication No. 1528-2012. August 2013

USDA is an equal opportunity provider and employer.